

1. Pontoon Installation Instructions

7/2/14

2. If your Pontoon Boat has a beam of 102" (most are) Assemble the arch as it comes from the box (If your Pontoon Boat has a beam of 96" you must cut 3" from each end of the center bridge assembly) , epoxying (MarineTex) the three sections together with the internal sleeves provided. Make sure that the surfaces inside the pipes of the arch and the sleeves are clean and dry. (the aluminum surface of the center section plate is UP. The plastic cover is DOWN. The fitting for the tow knob is AFT)
3. We recommend coating the inside surface of the pipes and then sliding the sleeve into it. This will minimize the amount of excess epoxy that squeezes out of the joint. Use plenty to ensure the entire bonding surface is coated. MarineTex cures very quickly, (about 10 min) we recommend you work with two joints at a time. Once the epoxy starts to cure, you have a short window of time when the excess can be easily removed by scraping it off. If you allow it to harden completely, it will be very difficult to remove.
 - a. If you have time to allow the MarineTex to completely cure (3-5 hours depending on temperature) no mechanical fasteners are required. If you want to mount the arch right after assembly, we suggest you drill and tap each joint for a ¼-20 machine screw. This will prevent possible motion and breaking the bond of the partially cured MarineTex. Image 0



4. 1. Determine the approximate position of your Pontoon Arch on the side of the boat. Most arches will be located in the aft 1/3 of the boat's length. Make sure that you have enough clearance under the arch to allow your fabric bimini top to fold. A location with the forward loop of the arch, just over the fabric bimini top usually works well. If you prefer another location for the arch, most bimini top frames can be fitted with Quick Release pins to allow the frame to be lowered or released to go up and down under the arch.

- i. Image 1 (drawing side view showing mtg hole and fwd edge of arch)

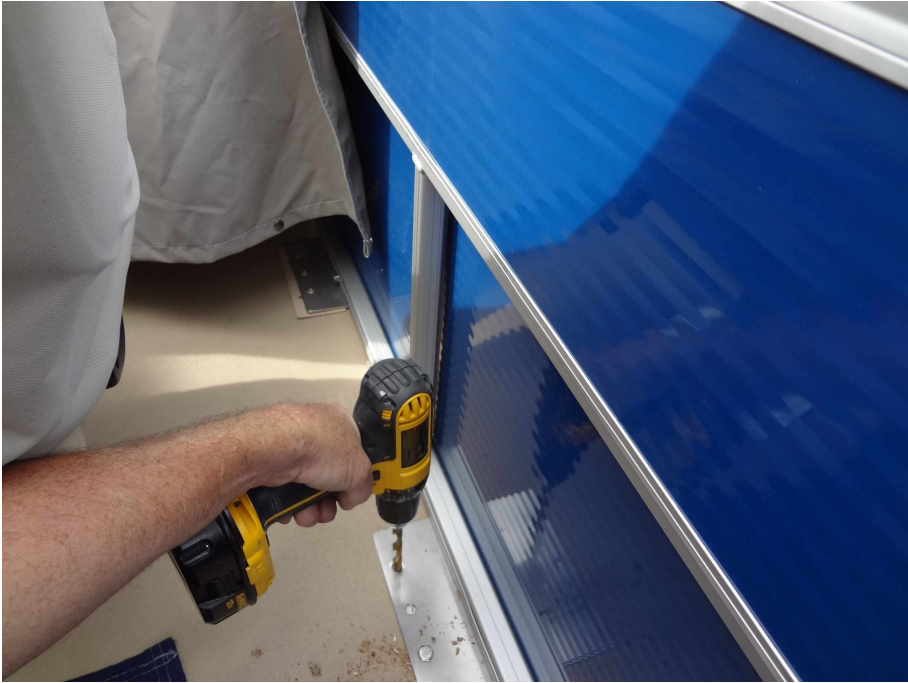
Slide the stainless steel L shaped mounting bracket under the fence, the long side under the fence, the short side up. You may need to temporarily remove some seating to gain access to the deck where you want to install the L brackets. The L brackets need to be installed so that there is 28" center to center distance between ANY mounting hole on the forward and aft bracket.

- b. Your Arch has been supplied with a template to make this easier. (the center to center distance between the holes in the base of the arch may vary slightly from the 28" due to the welding heat on the heavy 2 schedule 40 aluminum pipe. Each template is fitted to YOUR arch. They are marked "port" and "starboard")



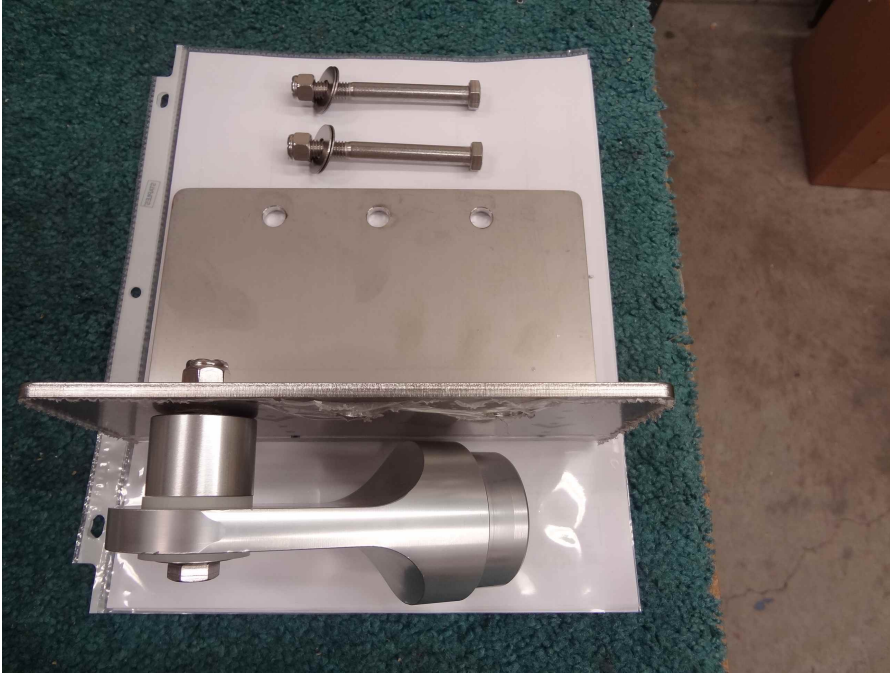
5. position the L brackets so that each bracket is over one of the aluminum beams running port to starboard. Drill thru the deck of the boat on the forward and aft sides of the beam, and use the aluminum backing bar to "clamp" the L bracket to the aluminum beam. (we do not recommend that you drill thru the aluminum cross beams of the boat) The arch will mount

correctly if the template mounts in any of the three holes in each bracket. The nominal center to center mounting distance on the arch is 28"



- a. Some Pontoons have aluminum trim or “skirting” which must be removed to gain access to the port and starboard beams. If the deck of your Pontoon is plywood, we recommend that you seal the drilled holes with epoxy to prevent water from getting into the laminate over time.
6. Install the Pontoon arch onto the brackets. The arch will be wider than the brackets when assembled. This is intentional. “Preloading” the Pontoon Arch will increase it’s rigidity. Squeeze the arch together using a ratchet strap until it can be fitted to the brackets. Assemble the nylon and aluminum spacers as shown





Your Pontoon Arch is open all the way around, so that wiring may be completely concealed inside. You may drill holes up to 1" in diameter for wiring entrance and

exit holes. Atlantic Towers has a wide range of bolt on accessories for mounting antennas, lights, etc. We also have a very nice clamp on rack for carrying your Kayak or paddle board. Check out our on-line store <http://store.atlantictowers.com/> or call us at 800-831-8889 (outside the US 732-237-8800) or email mkurzynowski@atlantictowers.com



OPTIONAL KNERF BARS

If you dock in an area where you tie up to pilings, fixed docks, or seawalls. Knerf Bars provide an extended rub rail and protection for your Pontoon Arch

