

## INSTRUCTIONS FOR RADAR ARCH INSTALLATION

- 1) INSERT PINS PROVIDED INTO THE FOUR ARCH LEGS AND TEMPORARILY TAPE IN PLACE. NOTE; LEGS HAVE EXTRA LENGTH, PLACING PINS IN WILL FACILITATE DETERMINATION OF AMOUNT TO BE TRIMMED.
- 2) LOCATE ARCH IN APPROXIMATE POSITION OVER BOAT, USE TEMPORARY SUPPORT STANDS AS NEEDED AND SECURE ARCH TO PREVENT MOVEMENT FROM SUDDEN WIND OR WEIGHT SHIFTS.
- 3) WORKING AT THE CENTERLINE OF THE BOAT AND ARCH, SET THE HEIGHT OF THE ARCH BY MEASURING FROM THE CENTERLINE OF UPPER ARCH PIPE DOWN TO DECK.( SEE FIGURE 1). MOST ARCHES ARE SET UP WITH THIS DIMENSION AS 81"(6"-9") BUT THE LEGS ARE CUT LONG TO GIVE INSTALLER THE OPTION OF ADJUSTING THIS HEIGHT TO SUIT THE PARTICULAR APPLICATION. A TOLERANCE OF +2-3" SHOULD BE OBSERVED.
- 4) CENTER ARCH OVER BOAT USING PLUM BOB AND LOCATE FORE/AFT AS PER DRAWING IF PROVIDED, OBSERVING A TOLERANCE OF + - 2-3". IN THE CASE WHERE A LOCATION IS NOT DICTATED THE INSTALLER MAY SELECT A LOCATION PROVIDED THAT ACCESS FOR BACK UP PLATES IS AVAILABLE.
- 5) LEVEL ARCH SIDE TO SIDE BY CHECKING HEIGHT FROM ARCH TO DECK A DISTANCE OFF OF CENTERLINE. ( SEE FIGURE 1, PT A & PT B). LEVEL FORE/AFT BY PLACING A LEVEL OR ANY SPACER OR RADAR PLATE. NOTE BOAT MUST BE LEVEL FIRST OR ADJUSTMENTS MADE.
- 6) WHEN FINAL POSITION HAS BEEN DETERMINED AND DOUBLE CHECKED, TRIM LEGS AS REQUIRED. PAD LOCATIONS SHOULD ALLOW ACCESS FOR THE INSTALLATION OF BACK UP PLATES.
- 7) FOLLOW INSTRUCTIONS W/ FIGURE 2 IN PERMANENTLY INSTALLING THE PINNED CONNECTIONS. TAKE CARE TO INSURE PROPER ALIGNMENT OF PIN TO PAD. PIN SHOULD SLIP EASILY BETWEEN PAD EARS.



- 8) MARK LOCATIONS OF PADS AND INSTALL USING FIGURE 3.
- 9) USING 3/8 – 16 S.S. HARDWARE TO MOUNT PINS/ARCH TO PAD. USE WASHERS AND LOCKNUTS.
- 10) WIRING- AN ENTRANCE HOLE INTO THE AFT ARCH LEG HAS BEEN PROVIDED UNDER THE RADAR PLATE. AFTER INSTALLATION DETERMINE EXIT POINT AND DRILL 7/8" HOLE (MAX) PULL WIRES/CABLES AS NEEDED
- 11) DRILL 1/8" WEEP HOLE APPROX 2" ABOVE THE END OF EACH PIPE LEG. THIS WILL PREVENT WATER FROM ACCUMULATING AND POSSIBLE DAMAGE FROM FREEZING.

---

Tower Systems, Inc.  
Box D, Bayville, New Jersey 08721  
1-800-831-8889 • 732-237-8800 phone • 732-237-8811 fax  
[www.atlantictowers.com](http://www.atlantictowers.com) • [atlantictowers@worldnet.att.net](mailto:atlantictowers@worldnet.att.net)

23



## Installation Instructions For TIAB Fish Arch

1. Layout the legs, and the bridge section on a flat surface the same as it will be on the boat.
2. Slide the top of the legs into the bridge pipes so the end of the pipes are past the second hole in.
3. On the boat, measure the distance at the mount points where the base fittings will be mounted, from the glass surface on one side to the glass surface on the other side.
4. Assemble the base fittings with the pins, and put the pins into the bottom of the legs. Wrap some tape around them to the legs to hold them in place the way they will mount on the boat.
5. Measure the distance between the flat mounting pads. This measurement needs to be about  $\frac{1}{2}$ " to  $\frac{3}{4}$ " larger than the mount points on the boat.
6. Slide the legs into the bridge until you get the correct distance between the mounting pads.
7. Drill thru the bridge pipes, and bolt the arch legs to the bridge.
8. Put the arch on the boat, and adjust the height. If it is too high, remove the bases, and pins, and cut the legs to the required length.
9. Put the arch back into position on the boat, and secure with bolts, backing plates, and locknuts.
10. Drill  $\frac{1}{8}$ " drain holes in the bottom of the legs, about 2" above the end of the pipes.

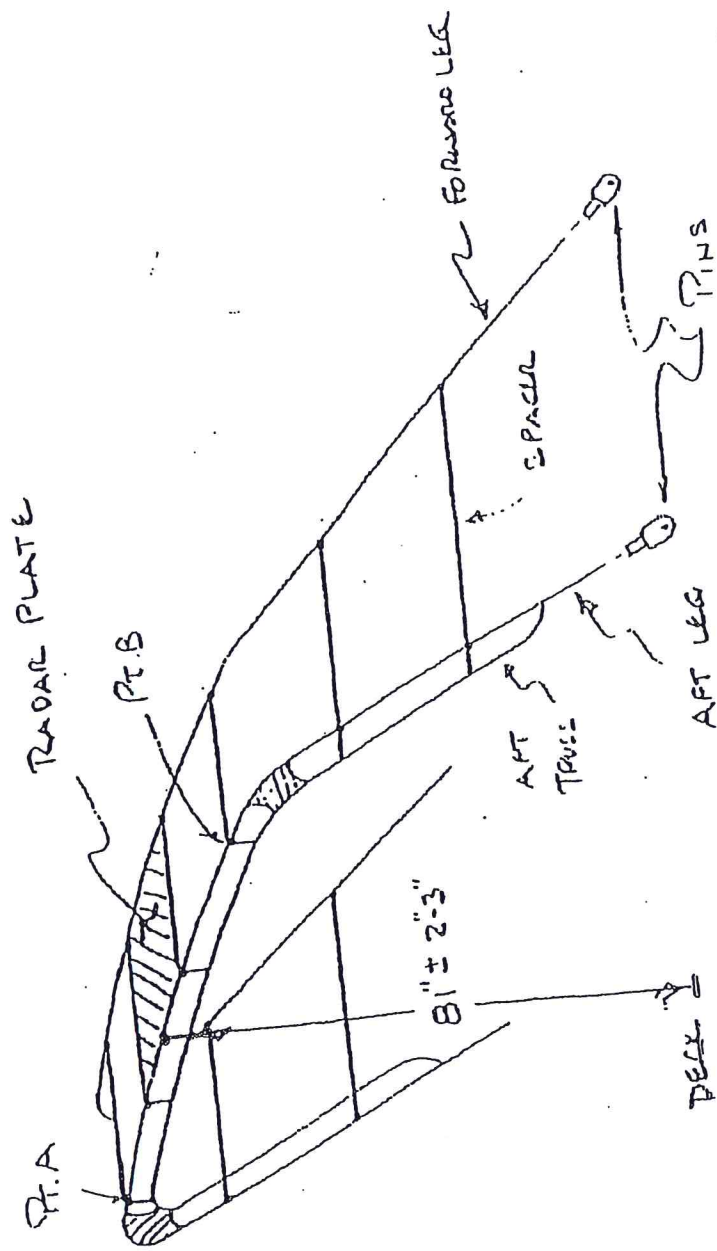
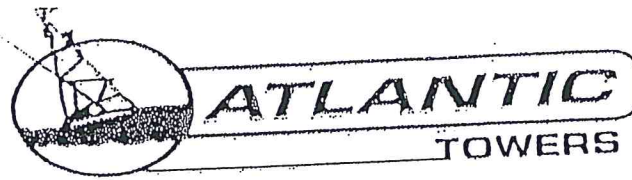
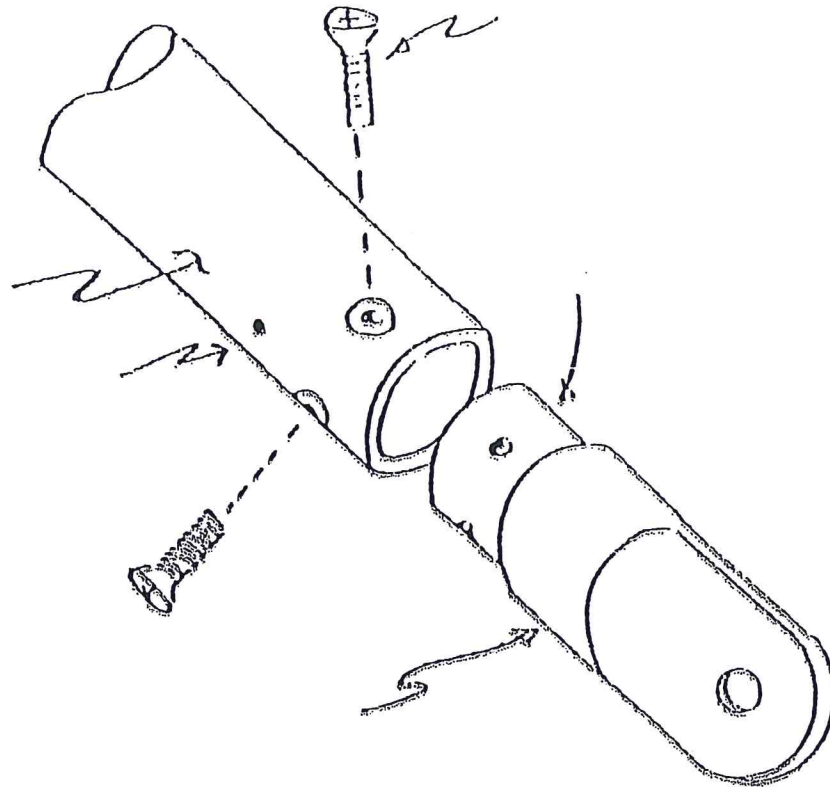


Figure 1



**INSTALLATION OF M100, WB009 & OTHER ATLANTIC TOWER FITTINGS INTO SCHEDULE 40 ALUMINUM PIPE**



- 1) DRILL & TAP AT 90 DEGREES FOR 1/4-20 MACHINE SCREW
- 2) COAT END OF SOLID FITTING WITH 2 PART EPOXY
- 3) INSTALL 1/4-20 MACHINE SCREWS WITH LOCTITE OR OTHER THREAD LOCKER (OR DIP THEM IN EPOXY)
- 4) CLEAN EXCESS EPOXY QUICKLY
- 5) DRILL 1/8" WEEP HOLE 1-1/2" ABOVE END OF PIPE  
IF YOU DO NOT WANT TO TAP HOLES, IT IS OK TO DRILL ALL THE WAY THRU THE PIPE AND FITTING AND INSTALL A 1/4-20 X 2-1/2" BOLT ALL THE WAY THRU

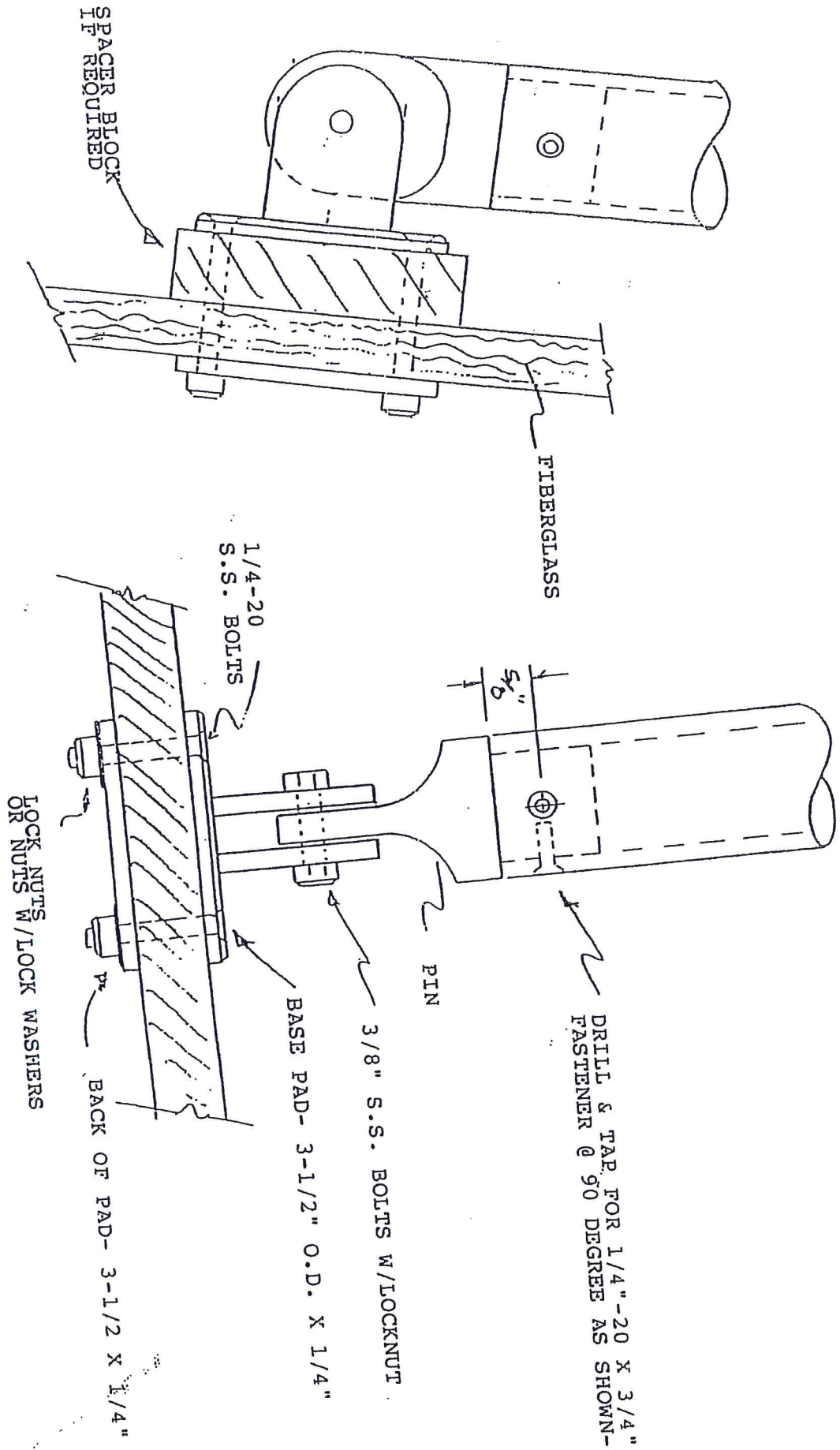


FIGURE 3