

Sun Top Assembly and Install Instructions:

1. Unpack your SunTop, being careful to preserve the original packing materials. If for any reason you decide not to keep your SunTop you will need them to return it. Check the materials received against the packing list. Once you are sure everything is there, it's time to begin assembly

Image P9050190.jpg

2. The first phase of assembly is to join the forward and aft sections of the top frame together. This is done with the internal splicing sleeves supplied

3. Insert the screw in the sleeves, leaving most of it protruding.

Image, #3 from BBT inst.

4. Mix just enough two part epoxy to cover 1/2 of the internal sleeves

Image #4 from BBT

5. Spread epoxy over 1/2 of sleeve and insert in the open ends of the after frame section. You will need to squeeze the sleeve to get it started and then tap it into place with a mallet or hammer until the screw is against the open end of the top frame. The epoxy cures rapidly. Scrape off excess epoxy before it is completely cured, and clean finished surfaces.

Image #5 from BBT crop so you can only see upright with sleeve going in.

6. Now you are ready to join the forward and aft sections of the top frame. It's helpful to use two people for this operation. Lay the sections on a flat surface and make sure they are in alignment. Mix another batch of epoxy spread it over the exposed end of the internal splicing sleeves. Tap the two sections together. When the joint is almost closed, remove the screw from the internal sleeve and tap together until the seam is completely closed.

7. Loosely attach the two aft legs to the top frame. Adjust the beam (width) between the legs so that they will land on the desired mounting area.

Image P9120154, Image P9080158

8. At this point, we suggest you lift the frame up on the boat placing it in position. It will likely be too high, and you will want to remove some length from the legs. We suggest 76"-80" under the cross bars, but you can install it as high as you wish.

9. Removing excess length from the legs.

- a. The aluminum is relatively soft and easy to cut, you can use a tubing cutter, hacksaw, sawzall, skill saw etc. A technique some professional installers use is, with the tubing cutter score the surface all the way around, then place your saw blade in the groove and follow it for a nice square cut. Deburr the inside with a tool or file, and you are ready for the base fittings from the Kit#1 (see instructions for installing M100s and other fittings packed with Kit#1 or download from the "Instructions" section of our website.)

Two Images to follow.

10. If you are installing the aft legs on the gunnell or other reasonably flat surface, just slip the assembled bases in the legs, and using a 2 x 4 or other support for the forward part of the top frame adjust the SunTop fore and aft until you have it positioned where you want.

Image P9080162

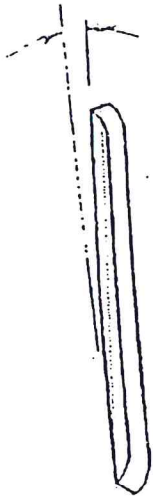
11. Once the rear legs and top are positioned, measure the distance from the forward port-starboard cross bar to the desired mounting point of the forward legs. The legs should be positioned between 20 deg and 60 deg from the vertical. Cut the legs at this length. They will be a little longer than necessary once you insert the bases (Kit#1)

12. Now loosely assemble the forward legs to the crossbar, and insert the base fittings in the forward legs. If necessary use some masking tape or have someone hold the legs in position. Step back, and take a look at your work. If everything looks good, it's now time to go ahead, install the M100 pins in the legs (see instructions with Kit #1) and bolt the bases to the boat using the supplied backing plates.

Image P9080163

Lacing top on, instructions same as BBT

GOOD



GOOD



NO GOOD



4

4

FIGURE 1

INSTALLATION OF M100, WB009 & OTHER ATLANTIC TOWER
FITTINGS INTO SCHEDULE 40 ALUMINUM PIPE

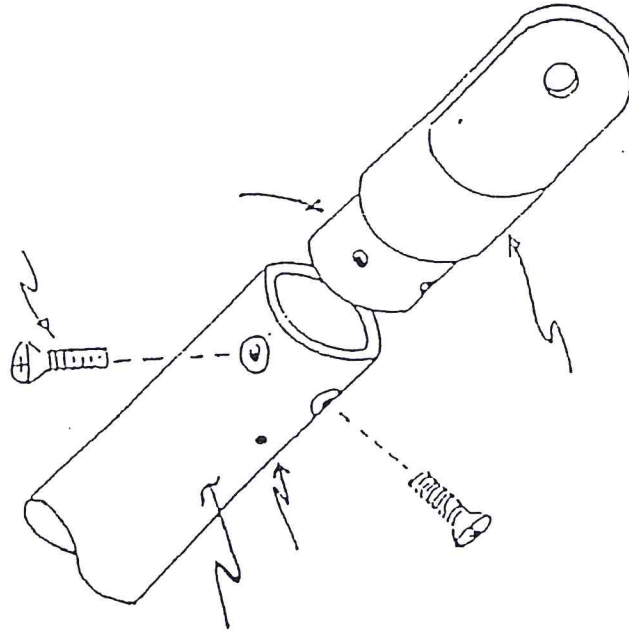


Fig. 1

- 1) DRILL & TAP AT 90 DEGREES FOR 1/4-20 MACHINE SCREW
 - 2) COAT END OF SOLID FITTING WITH 2 PART EPOXY
 - 3) INSTALL 1/4-20 MACHINE SCREWS WITH LOCTITE OR OTHER THREAD LOCKER (OR DIP THEM IN EPOXY)
 - 4) CLEAN EXCESS EPOXY QUICKLY
 - 5) DRILL 1/8" WEEP HOLE 1-1/2" ABOVE END OF PIPE
- ***IF YOU DO NOT WANT TO TAP HOLES, IT IS OK TO DRILL ALL THE WAY THRU THE PIPE AND FITTING AND INSTALL A 1/4-20 X 2-1/2" BOLT ALL THE WAY THRU

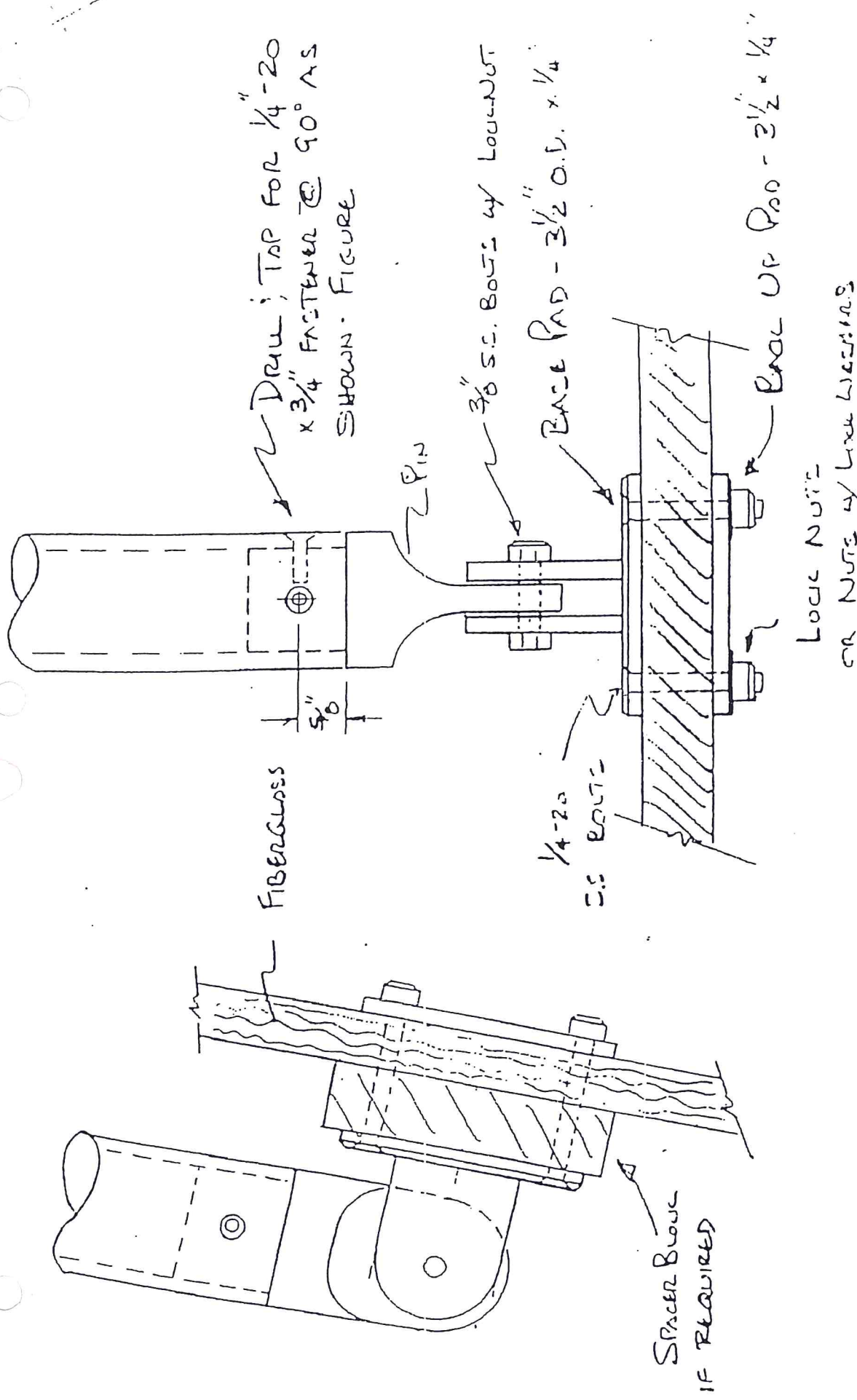
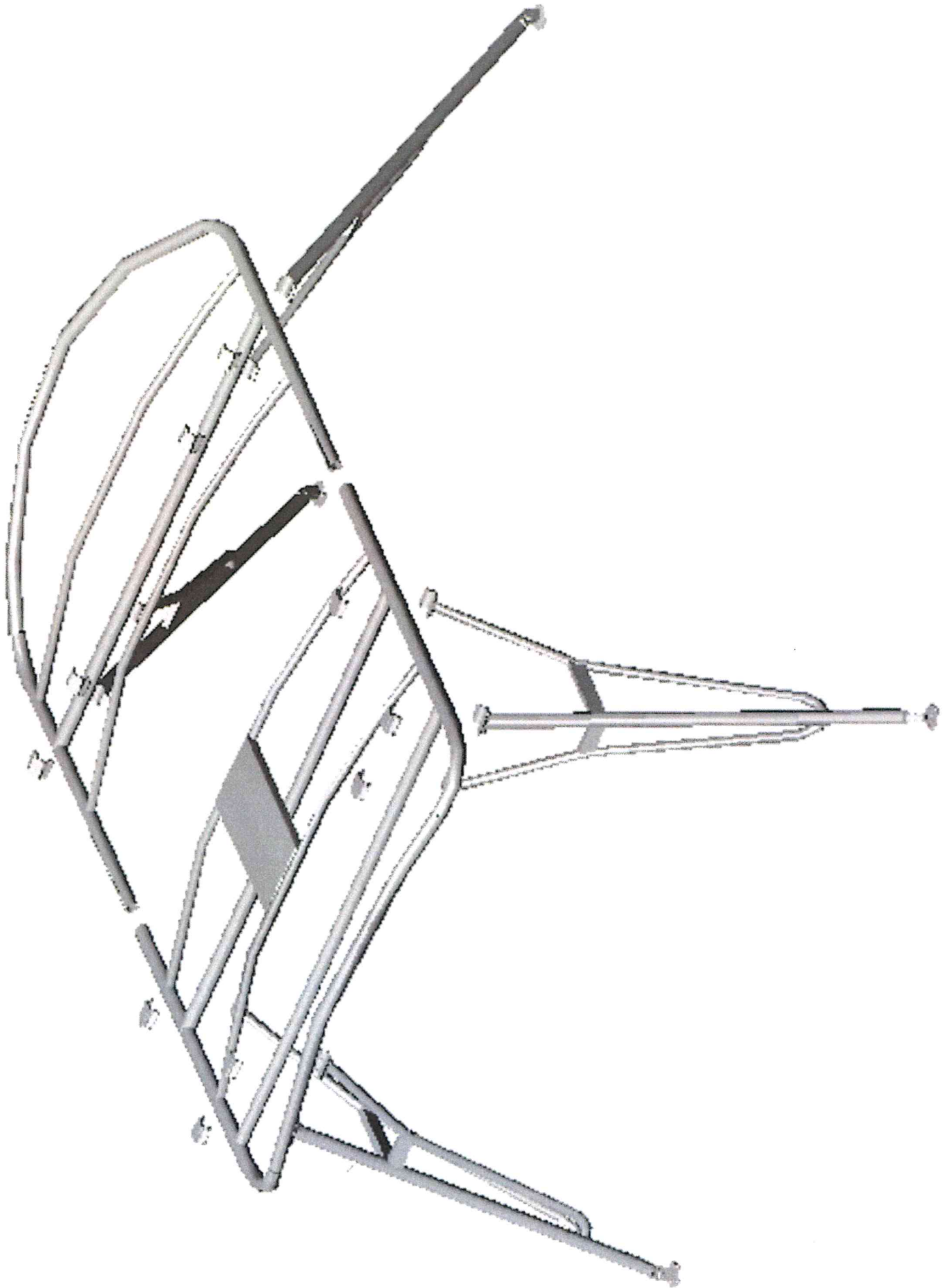
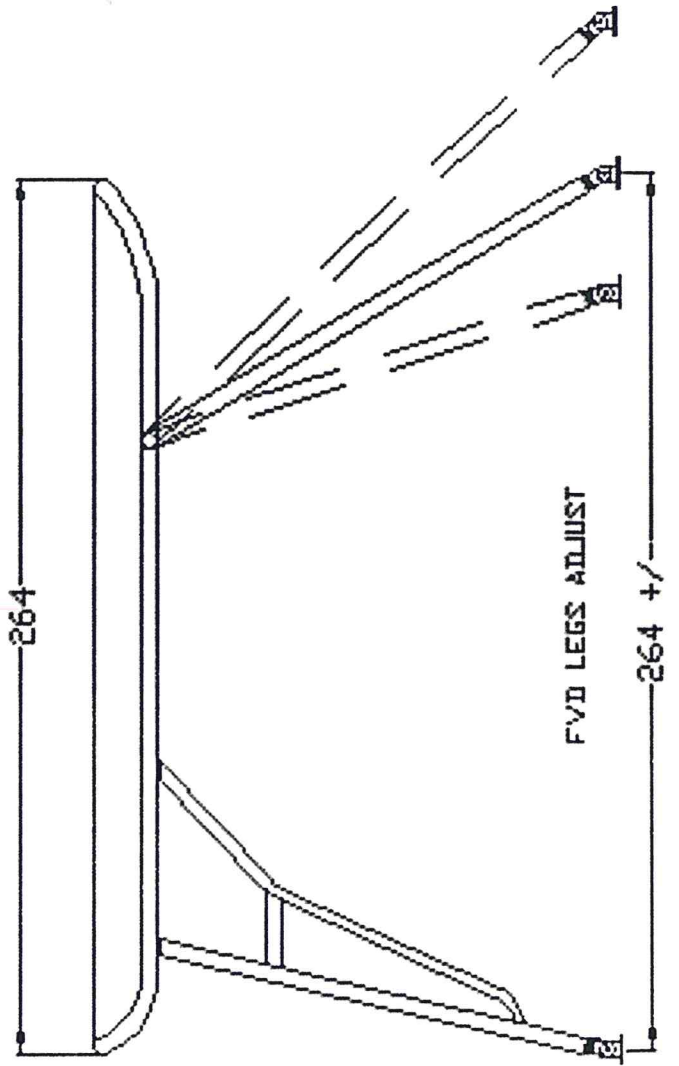
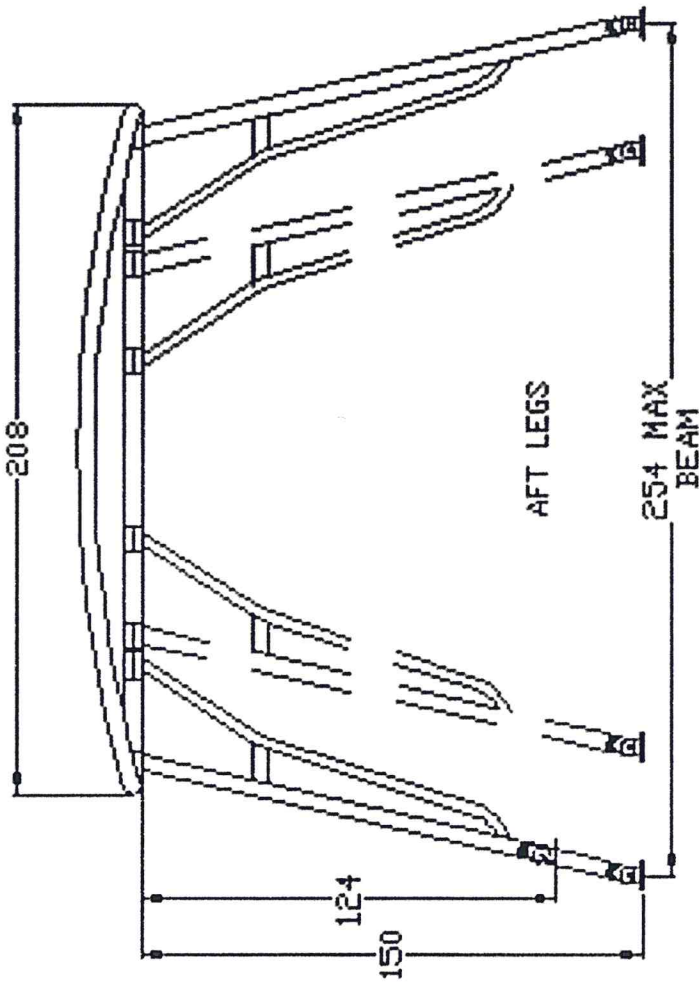
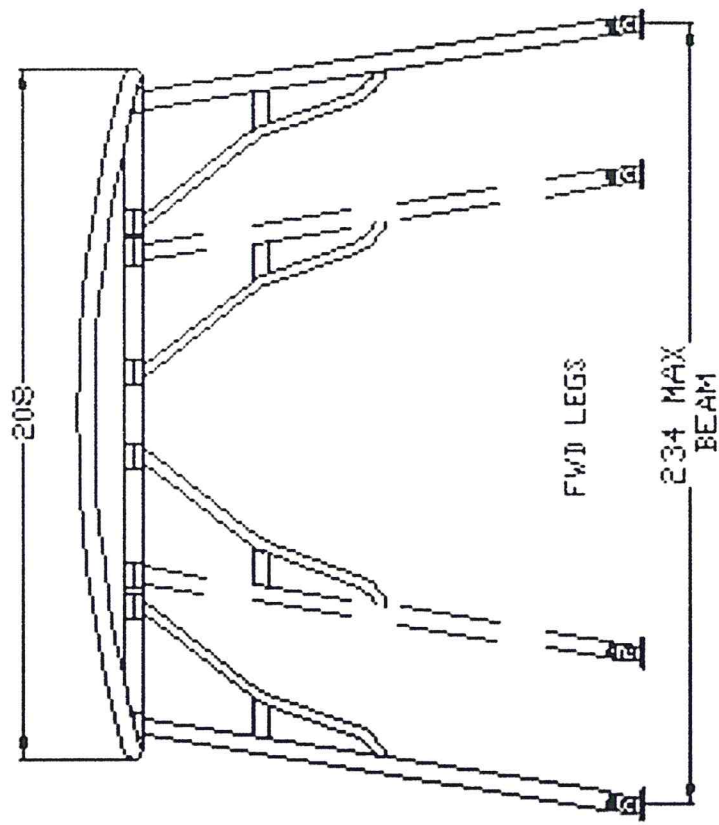


FIGURE 3





MED SHADE Install LAYOUT 7
9/23/08