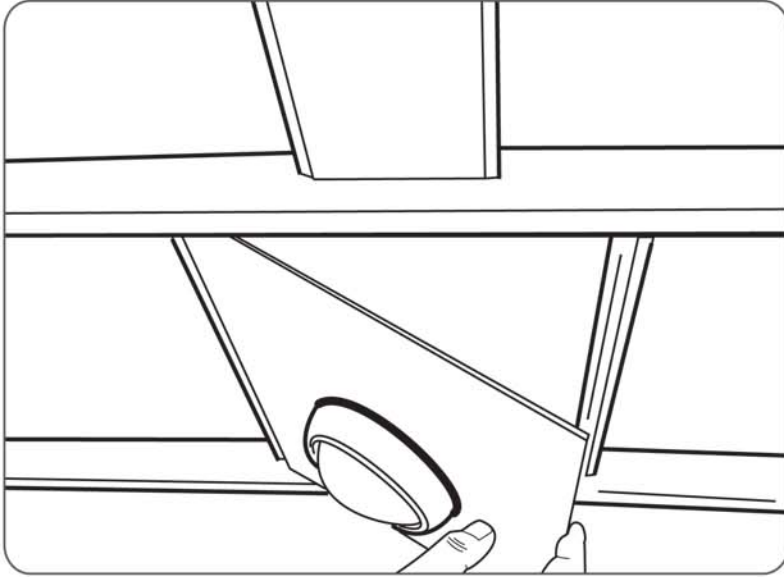


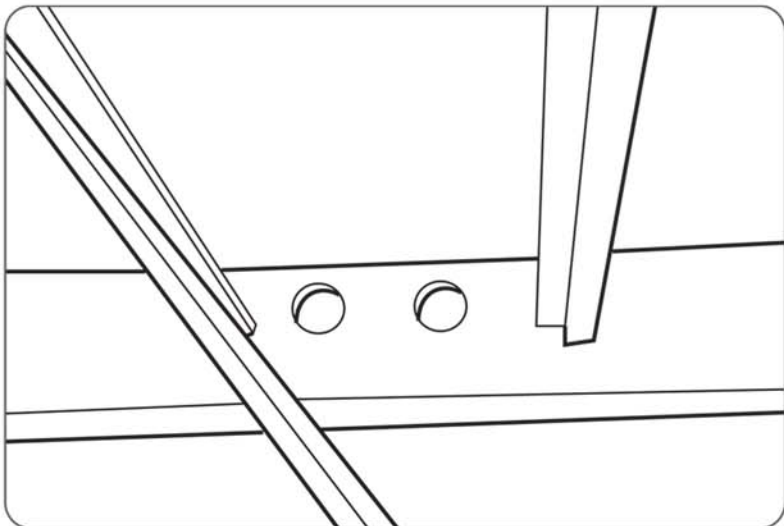
Wiring Instructions



- Remove white cover panels.

- Drill holes through carlin that are no more than 3/4" in diameter and a distance of 1" apart.

- Drill through carlins until you reach the rear carlin.



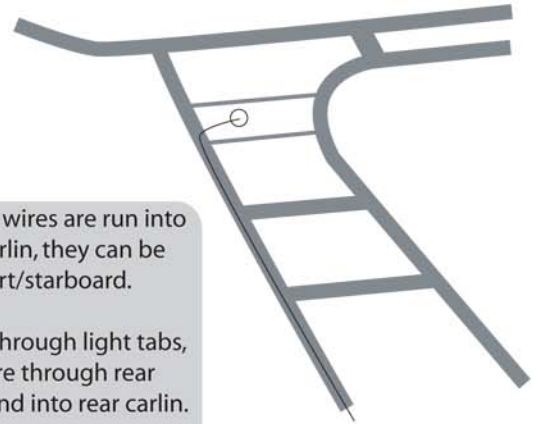
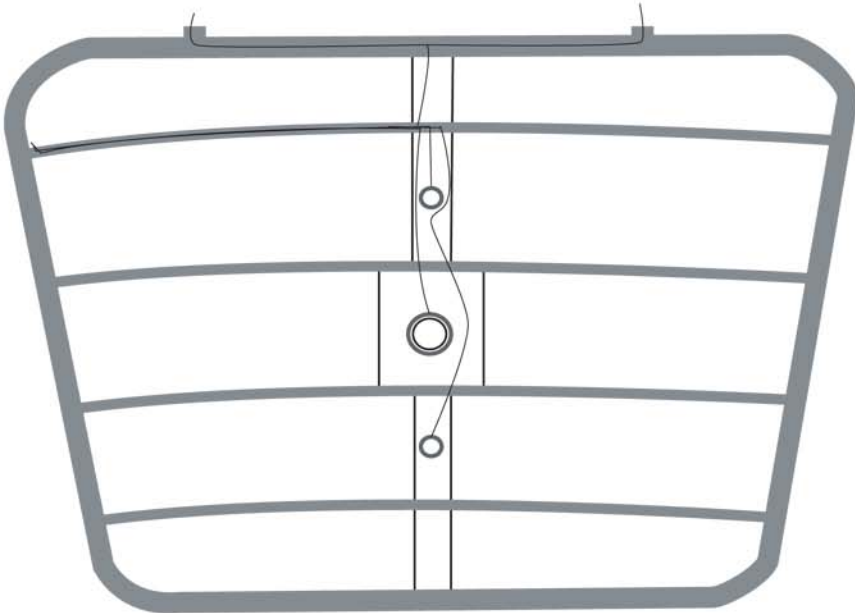
NOTES

> There is no need to use grommets; they will most likely fall out over time.

> Use a de-burring tool on holes, use of electrical tape helps wires pass through holes.

> Always pull a "messenger" line through with your wires or cables. That way it will be much easier to pull additional cable, a day or a year later.

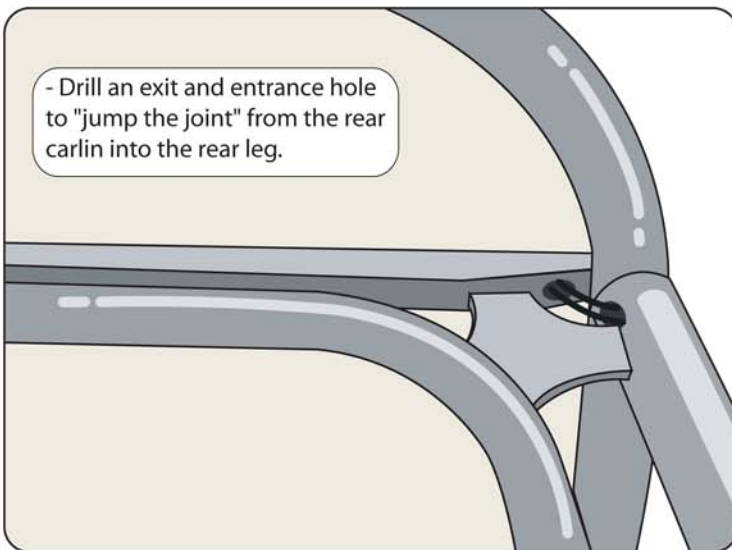
Wiring Instructions - part 2



- Once wires are run into rear carlin, they can be run port/starboard.

- Drill through light tabs, run wire through rear pipe, and into rear carlin.

- Remove cover panel on legs and run wire down leg.



- Drill an exit and entrance hole to "jump the joint" from the rear carlin into the rear leg.

NOTES

> Drill up to a 1" exit hole to your boat at 1.5" above mounting foot.

> Bring wire out of leg and make a loop [so water runs off] then run wire into boat. Use a stainless clamshell vent to cover hole.

> Leave excess wire coiled in wall of boat incase you want to remove the structure without cutting the wire.

> Use heat shrinkable butt connectors.

> For arches drill holes on the underside of the arch under equipment. Follow above notes.