



3900 DIGHT AVE. S.  
MINNEAPOLIS, MN 55406  
PHONE: (612) 724-9361  
FAX: (612) 724-9362

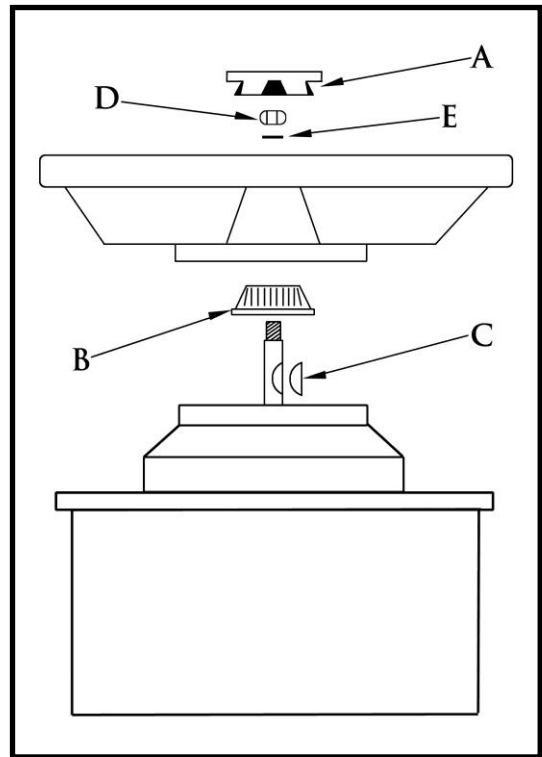
WWW.DAVIT.COM  
EMAIL: STCROIX@DAVIT.COM

DAVITS • CRANES • LADDERS • CHOCKS • ROLL-ONS • TIP-UPS • HELMS • TOW BARS • MOTOR MOUNTS

## 122 Euro Helm System Installation Instructions

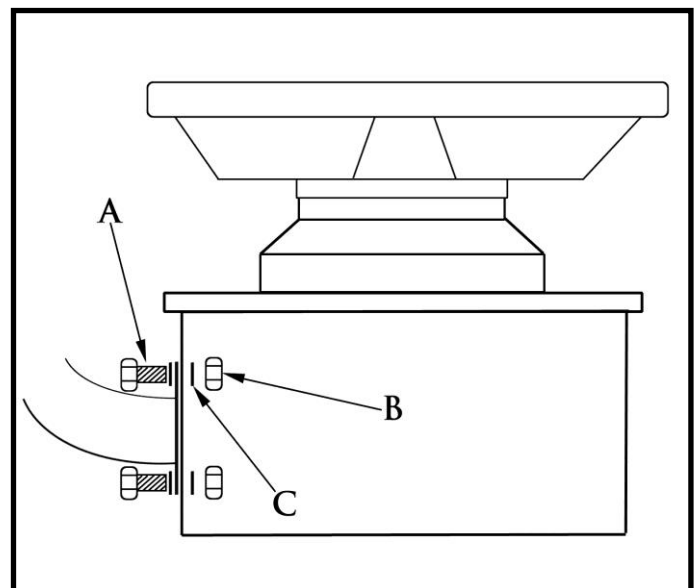
### STEERING WHEEL ASSEMBLY

- A.) Button V60 Antigua Black (1)
- B.) Steering Hub (1)
- C.) Woodruff Key (1)
- D.)  $\frac{1}{2}$ " Full Size Lock Nut (1)
- E.)  $\frac{1}{2}$ " A&N Washer (1)



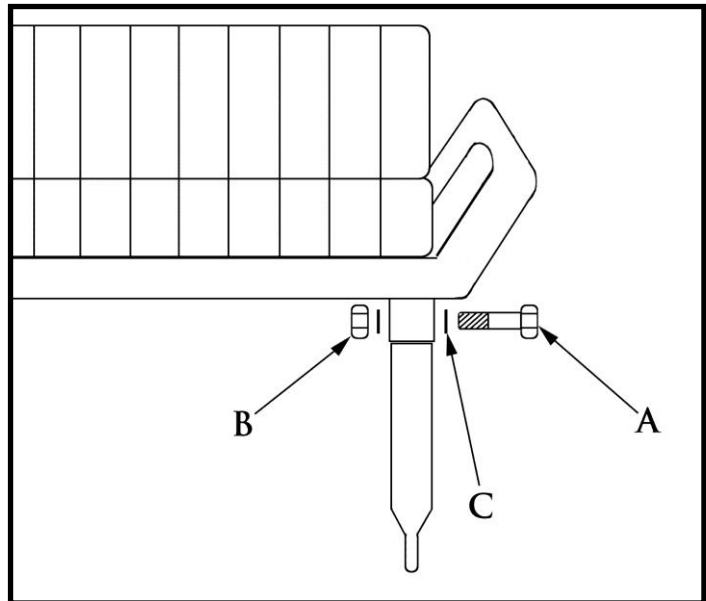
### ARM ASSEMBLY

- A.)  $\frac{5}{16}$  x  $\frac{3}{4}$ " Bolts (4)
- B.)  $\frac{5}{16}$ " Full Size Lock Nuts (4)
- C.)  $\frac{5}{16}$ " A&N Washers (8)



## LEG ASSEMBLY

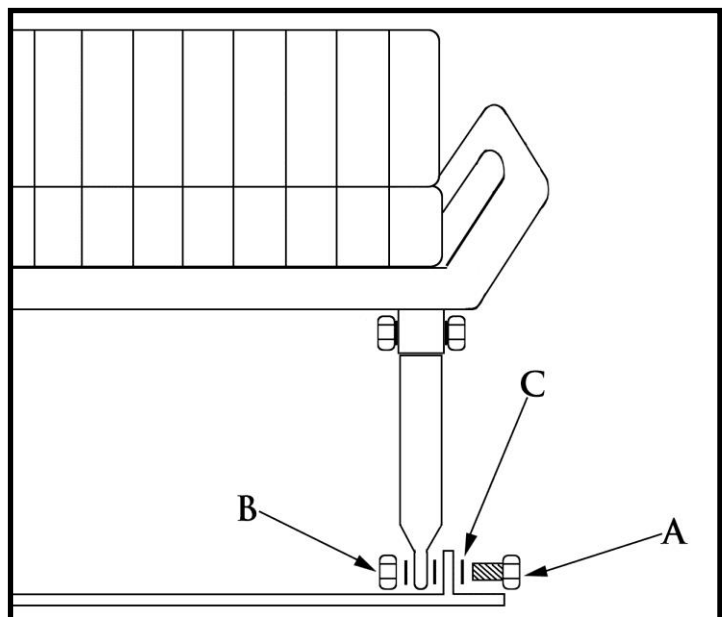
- A.) 5/16" x 2" HH Bolts (4)
- B.) 5/16" Full Size Lock Nuts (4)
- C.) 5/16" A&N Washers (8)



## LEG BASE ASSEMBLY

- A.) 3/8" x 1" HH Bolts (4)
- B.) 3/8" Full Size Lock Nuts (4)
- C.) 3/8" SAE Washers (4)\*
- D.) 3/8" A&N Washers (8)

\*The large washer goes in between the leg and the feet see drawing.



## STEP 1 – SYSTEM PREPARATION

- The steering cable(s) will need to be installed in the vessel.
- Select a direct path with a minimal number of bends.
- The minimum bend radius for a steering cable is 8 inches (200mm)

**CAUTION: A MORE SEVERE BEND WILL CAUSE STEERING FRICTION AND PREMATURE CABLE LIFE.**

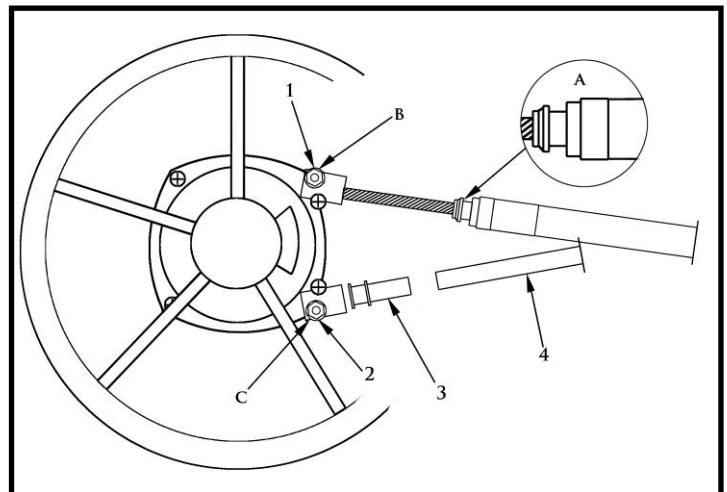
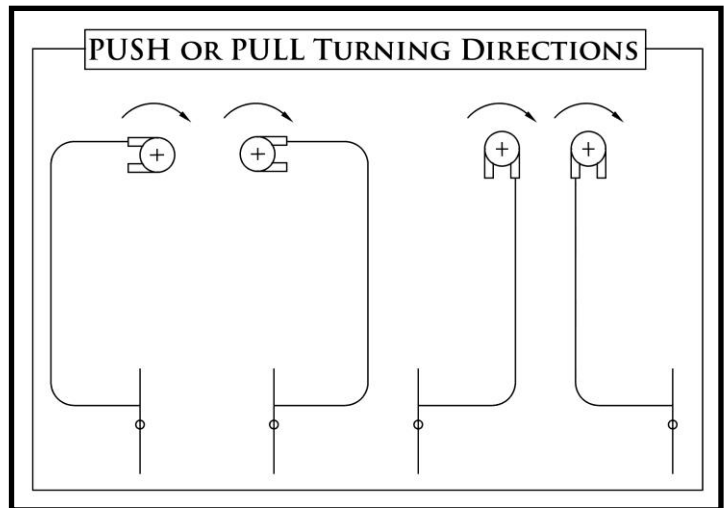
- The steering cable(s) will need to be supported at a minimum of 6' (2mt) intervals it's entire length. Do not bundle any electrical wires to the cable(s) when supporting.
- Bulkhead passages require a minimum 1 1/2" hole diameter (38mm)

## STEP 2 – STEERING CABLE CONNECTION(S)

- Determine the correct helm entry to use for the proper turning direction of the rudder apparatus.
- Connect the cable(s) to the helm before the rudder.
- Remove the protective tube from the cable(s) end, and insert the helical cable end(s) into the helm.

**WARNING: PREVENT ANY DUST OR FOREIGN MATERIAL FROM CONTACTING THE EXPOSED GREASED HELICAL CABLE END(S).**

- Turn the steering wheel in the referenced direction to "pull" the cable(s) into the helm, aligning cable conduit recess(s) (A) with screw hole in helm base (1).
- Insert one of the cable locking screws (B). **Torque screw to 4 1/2" in. lbs. (6Nm)**
- Slide the guide tube bushing(s) (3), large end first, over the helical cable of the second entry of the helm (C).
- Align the bushing recess with the screw in the end of the helm and insert the second locking screw (2). **Torque screw to 4 1/2" in. lbs. (6Nm).**
- Slide Protective tube(s) (4) over the exposed helical cable onto the end of the guide tube bushing (3).



## STEP 3 – TEST THE SYSTEM

- With the steering cable connected to the rudder, rotate the steering wheel in both directions.
- Confirm that the direction the steering wheel is turning is correct to turn the boat the same direction.

**WARNING: CHECK THE DIRECTION THE STEERING SYSTEM IS MOVING IN REGARDS TO THE TURNING DIRECTION OF THE VESSEL. THIS MUST BE PERFORMED BEFORE THE VESSEL IS OPERATED IN THE WATER.**